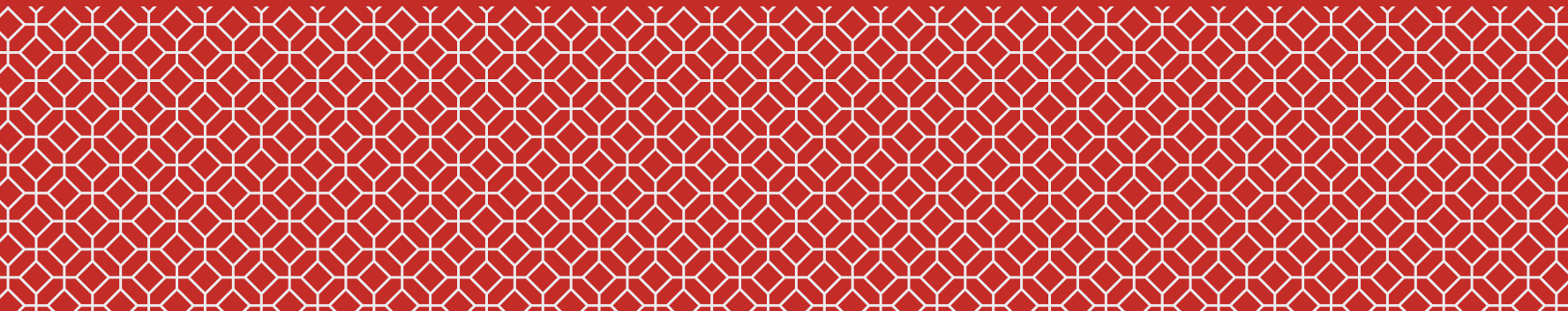




四川飯店

SHISEN HANTEN  
by CHEN KENTARO

**BEVERAGE MENU**





## SAKE

Bottle

- |      |   |     |
|------|---|-----|
| 7001 | <p>蓬萊 純米大吟醸 色男<br/>Hourai Junmai Daiginjo Iro Otoko</p> <p><i>Light melon aromas and lanolin lend smoothness to the flow across the palate. Elegant and well balanced with finesses.</i></p>  | 148 |
| 7002 | <p>月の桂 柳 純米吟醸酒<br/>Tsukino Katsura Yanagi Junmai Ginjoshu</p> <p><i>Exquisite soft sweetness, sharp and firm acidity. Enjoy its balance by bringing out the light and fluffy taste, with a comfortable aftertaste of its sharpness.</i></p>   | 168 |
| 7003 | <p>真野鶴 純米大吟醸 佐渡山田錦<br/>Manotsuru Junmai Daiginjo Sado Yamada Nishiki</p> <p><i>Full taste notes of roses, orange blossoms and apples. At every stage of the tasting, there is gracefulness and elegance.</i></p>  | 188 |
| 7004 | <p>獺祭23 純米大吟醸<br/>Dassai 23 Junmai Daiginjo</p> <p><i>With a nose of grapes, flowers, strawberries and mineral water flavour that is luscious as its aroma. Gorgeous balance of melons and peaches with fruity and elegant long finish.</i></p>   | 208 |
| 7005 | <p>英勳 純米大吟醸 一吟<br/>Eikun Ichigin Junmai Daiginjo</p> <p><i>A beautiful Nashi Pear fragrance, silky and clean touch on your palate, with a medium body and dry crisp finish. This is the only sake that has won the gold medals at Japanese New Sake Award 10 years running from 1998 to 2007.</i></p> | 228 |
| 7006 | <p>大七 頌歌 純米大吟醸雫酒<br/>Daishichi Shoka Junmai Daiginjo</p> <p><i>The refined, graceful aroma and the seductive umami of Shoka harmonises an exquisite herbal-floral perfume with the perfect balance of body, acidity, and purity.</i></p>  | 248 |

## SAKE

Bottle

- |      |   |     |
|------|---|-----|
| 7007 | <p>九平次 純米大吟醸 彼の地<br/>Kuheiji Kanochi Junmai Daiginjo</p> <p><i>A robust feel of fruitiness with sweetness and exotic flavour that leaves a lingering finish. The complexity of acidity, sweetness, pungency, bitterness, and astringency with delicate and elegant flavour.</i></p> | 268 |
| 7008 | <p>月の桂 純米大吟醸 把和游<br/>Tsukino Katsura Junmai Daiginjo "How Are You"</p> <p><i>Enjoy the fruity aroma, refreshing acidity and smooth texture. The sake has a beautiful, clear character and a delightfully smooth finish.</i></p>   | 328 |
| 7009 | <p>石鎚 純米大吟醸 VANQUISH<br/>Ishizuchi Junmai Daiginjo Vanquish</p> <p><i>With an elegant aroma and delicate soft taste, and it is subtle with flower aromas. A palate of poached pears and pear drops, with a pure and clean finish.</i></p>   | 398 |
| 7010 | <p>黒龍 大吟醸 龍1.8L<br/>Kokuryu Daiginjo Ryu 1.8L</p> <p><i>Assertive yet gentle, delicate yet robust. Well balanced flavour of rice and acidity.</i></p>   | 448 |
| 7011 | <p>残響Super7 超特選 純米大吟醸<br/>Zankyo Super 7 Junmai Daiginjo</p> <p><i>Charming aroma of grapes, citrus and floral, with a good balance of sweetness and acidity. It enchants an uplifting fresh-mouth experience.</i></p>  | 948 |

## CHINESE WINE 中国名酒

### Bai Jiu 白酒

		Bottle
Luzhou Laojiao Zisar 52% 泸州老窖紫砂 52度	38 (100ml)	168 (500ml)
Shanxi Feng Jiu 20 Years 42% 山西汾酒二十年 42度		298
Shaanxi Xi Feng Jiu 30 Years 52% 陕西西凤酒三十年 52度		298
Meng Chi Lan M6 52% 梦之蓝 M6 52度		448
Yibin Wu Liang Ye 52% 宜宾五粮液 52度		488
Guizhou Moutai 53% 贵州茅台 53度		888
Guizhou 15 Years Moutai 53% 贵州十五年年份茅台 53度		2888
Guizhou 30 Years Moutai 53% 贵州三十年年份茅台 53度		6888
Guizhou 50 Years Moutai 53% 贵州五十年年份茅台 53度		9888

## CHINESE WINE 中国名酒

### Huang Jiu 黄酒

Bottle

10 Years Pagoda Recheers Rice Wine (375ml)  
十年陈塔牌丽春黄酒 (375ml)

48

8 Years Extra Shaoxing Hua Tiao Chew (375ml)  
八年陈绍兴花雕酒 (375ml)

55

10 Years Gu Yue Long Shan Shao Shing (500ml)  
十年陈古越龙山花雕酒 (500ml)

88

20 years Gu Yue Long Shan Shao Shing (500ml)  
二十年陈古越龙山花雕酒 (500ml)

168

30 Years Kuai Ji Shan Shao Shing (600ml)  
三十年陈会稽山花雕酒 (600ml)

368

## SCOTCH

### The Balvenie's Selection – Speyside

	Glass	Bottle
Doublewood 12 Year Old	20	268
Caribbean Cask 14 Year Old	25	368
Stories Week of Peat Aged 14 Year Old	28	398
Doublewood 17 Year Old	30	550
Portwood 21 Year Old		980
30 Year Old Nomad Outland Whisky		5800

---

### BenRiach Distillery's Selections - Speyside

The Twenty-One	52	780
----------------	----	-----

## SCOTCH

### Dalmore Distillery's Selections - Highland

	Glass	Bottle
Highland Single Malt 15 Year Old	32	475
Highland Single Malt 21 Year Old		2250

---

## JAPANESE WHISKY

Mar's Shinshu Distillery Traditional Iwai	20	320
Nikka Taketsuru Pure Malt	22	330
Kurayoshi Pure Malt	24	360
Umiki	24	308
Kurayoshi Sherry Cask	28	420
Hakushu Distiller Reserve	30	450
Kura Rum Cask Finish	32	480
Hibiki Harmony	34	510
Kurayoshi 12 Year Old	36	540
Yamazaki Distiller Reserve	36	540



## SPIRITS

### Gin

	Glass	Bottle
Suntory Roku	18	270
Hendrick's	20	300
Ferdinand's SAAR Dry Gin	21	268 <i>(500ml)</i>
Ki No Bi	22	330
Monkey 47	24	240 <i>(500ml)</i>
The London No. 1 Original Blue Gin	26	298
Sakaki Gin XIX	28	328

---

### Vodka

Grey Goose	16	228
Ciroc	19	285

---

### Rum

Havana Club 3 Years	16	258
Diplomatico Reserva Exclusive	18	258

## SPIRITS

### Cognac

	Glass	Bottle
Domaines Francis Abécassis ABK6 Cognac V.S.O.P.	18	258
Hennessy V.S.O.P.	22	288
Alvear Brandy Gran Reserva	23	345
Martell Cordon Bleu	38	560
Remy Martin Louis XIII	518	7800

---

### Beer

Kirin Ichiban Draught	16	
Tiger Crystal		16
Jing A Brewing Co. Worker's Pale Ale		16
The Suntory Premium Malt		19

## COFFEE

### Nespresso Coffee

Cup

Espresso Intenso - Espresso or Coffee

6

Decaffeinated - Espresso or Coffee

6

---

### Surgival Mineral Water 矿泉水

Bottle

Still / Sparkling

8

## CHINESE TEA 中国茗茶

Person

### Silver Needle 白毫银针

12

*Silver Needle has a sweet velvety taste and mouthfeel. The tea is minimally processed and simply dried, attributing to its high levels of antioxidants with anti-ageing benefits.*  
白毫银针，是中国六大白茶类之一也是白茶中最名贵的茶种，原产地在福建。白毫银针具有甜美的天鹅绒般的味道和口感。具有独特的保健功效，因其高水平的抗氧化剂和抗衰老功效。

### Zhen Yan Da Hong Pao 正岩大红袍

11

*Touted as the "Emperor Tea of Wuyi" and the best of the great four of Mount Wu Yi, the heavily fermented Oolong captivates the taste buds of millions with its woody profile. Enjoy a sophisticated, complex flavour with orchid flowers, finished with subtle caramelised sweetness.*  
大红袍，产于福建武夷山，属乌龙茶，品质优异。其外形条索紧结，色泽绿褐鲜润，冲泡后汤色橙黄明亮，叶片红绿相间。品质最突出之处是香气馥郁有兰花香，香高而久，“岩韵”明显

### Er Mei Bamboo Green 峨眉竹叶青

9

*Bamboo Green, a unique green tea that comes from Mount Ermei (Er Mei Shan), located in the Sichuan Province. Bamboo green is also one of the earliest teas harvested in the season of Spring. A vegetal mild aroma, and creamy taste with instant serenity, while its sweetness continues to linger in your mouth.*  
峨眉竹叶青为不发酵茶，属于绿茶中精品。竹叶青茶具有消暑、清热、去火、化痰解毒等功效，是食疗的理想、佳品,无任何副作用

### An Xi Guan Yin 安溪铁观音

8

*Definite buttery taste notes and a sweet floral note, reminiscing the flow of sweet pea flowers. The refreshing aftertaste is complex and lightly sweet. It may also prevent aging, over-oxidation in the body, and may aid in losing weight.*  
清香铁观音属轻发酵茶叶。其口感鲜爽，浓香型口感醇厚回甘。铁观音的多酚有助于抗衰老，有助于防止体内过度氧化。它还有助于减肥，因为它可以更快地燃烧脂肪。

## CHINESE TEA 中国茗茶

Person

### Lion Peak Long Jing 狮峰龙井

7

*Also known as Imperial Tea, Long Jing is well-known to be the most famous tea in the world, with its top grade of tea in Lion Peak, with a mellow sweet taste, containing several health benefits.*

狮峰龙井以喻有“天下第一茶村”的杭州龙井村、翁家山村为主产地。其汤色碧绿明亮，香馥如兰，滋味甘醇鲜爽，向有“色绿、香郁、味醇、形美”四绝之誉。

### Pu Er Aged 18 Years 云南18年珍藏普洱

8

*Aged Pu Er originates from Yunnan, China, with a strong earthy note, and a clean smooth texture. The microorganisms that are present in the tea aids in digestion and may lower cholesterol levels.*

老普洱源自中国云南。其外形色泽褐红；内质汤色红浓明亮，香气独特沉香，滋味醇厚回甘，叶底褐红。普洱中的微生物有助于消化，降低身体的脂肪和胆固醇。

### Baby Chrysanthemum 胎菊

6

*Well-known for its effectiveness in maintaining beautiful skin and boosting immunity, Chrysanthemum may also aid in slowing down the ageing process, lowers bad cholesterol and prevents high blood pressure. Caffeine-free, this brew is well enjoyed by all ages.*

胎菊是雪菊中最上品的一种。第一次在新疆雪菊花朵未完全张开的时候摘收下来的为胎菊，前两次采摘的质量最好，经干燥加工出来后为特级花选用的是头序花蕾初开的嫩芽，精心的蒸制，烘焙而成。具有独特的味道。以它的稀少而颇为珍贵

### Jasmine Pearl 茉莉龙珠

6

*Hand-rolled into small pearls and infused with the essence of fresh jasmine blossoms in this classic tea. The tea absorbs the fragrant essence of the fresh jasmine flowers, allowing the pearls sweet and aromatic.*

茉莉花茶是用经加工干燥的茶叶，与含苞待放的茉莉鲜花混合窈制而成的再加工茶。喝茉莉花茶，可以帮助缓解紧张情绪，消除抑郁，还有去脂、清肠、开胃的功效。